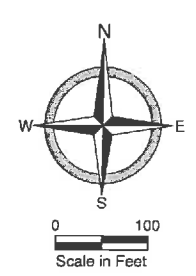
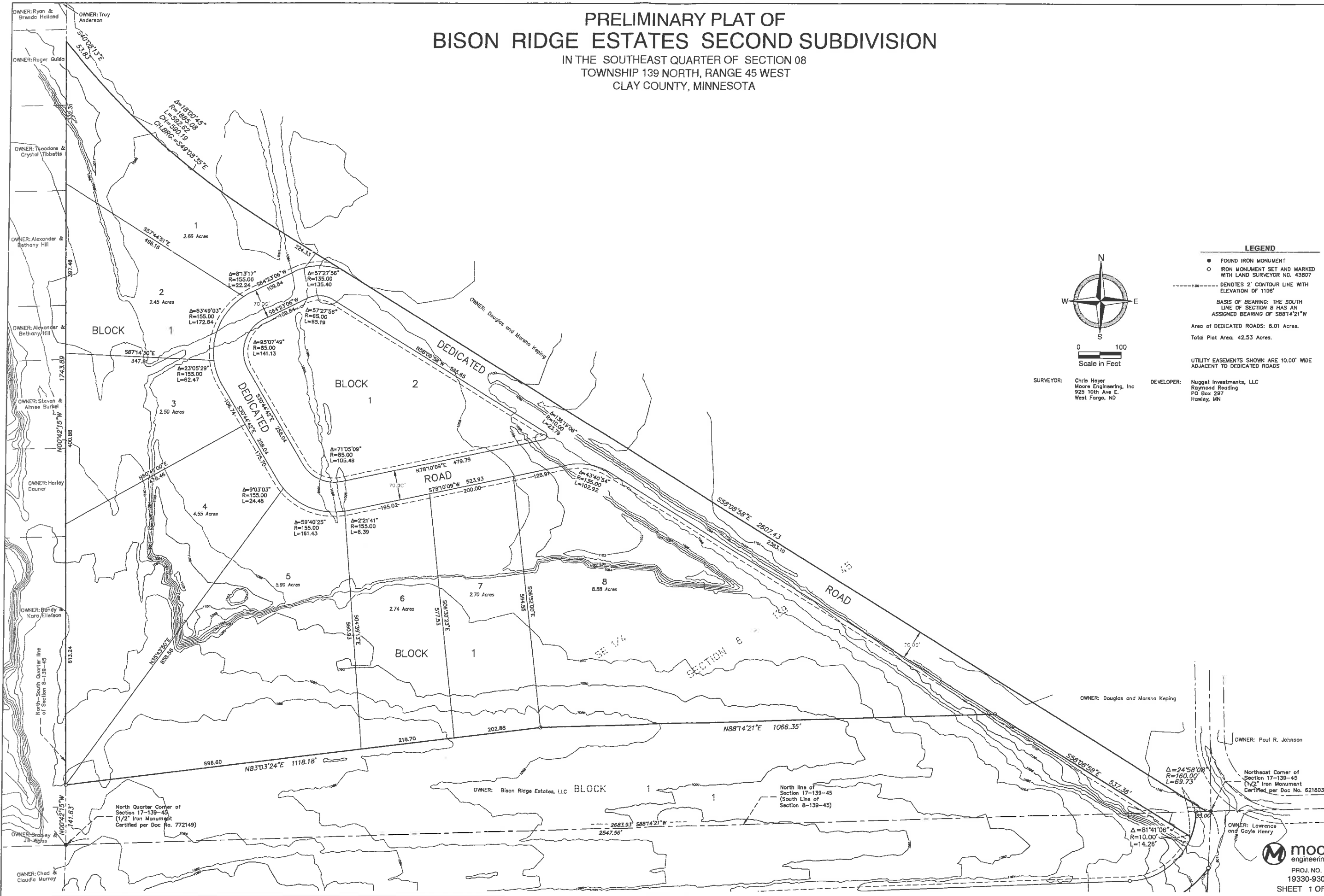


# PRELIMINARY PLAT OF BISON RIDGE ESTATES SECOND SUBDIVISION

IN THE SOUTHEAST QUARTER OF SECTION 08  
TOWNSHIP 139 NORTH, RANGE 45 WEST  
CLAY COUNTY, MINNESOTA



### LEGEND

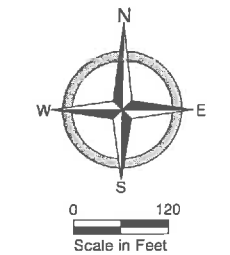
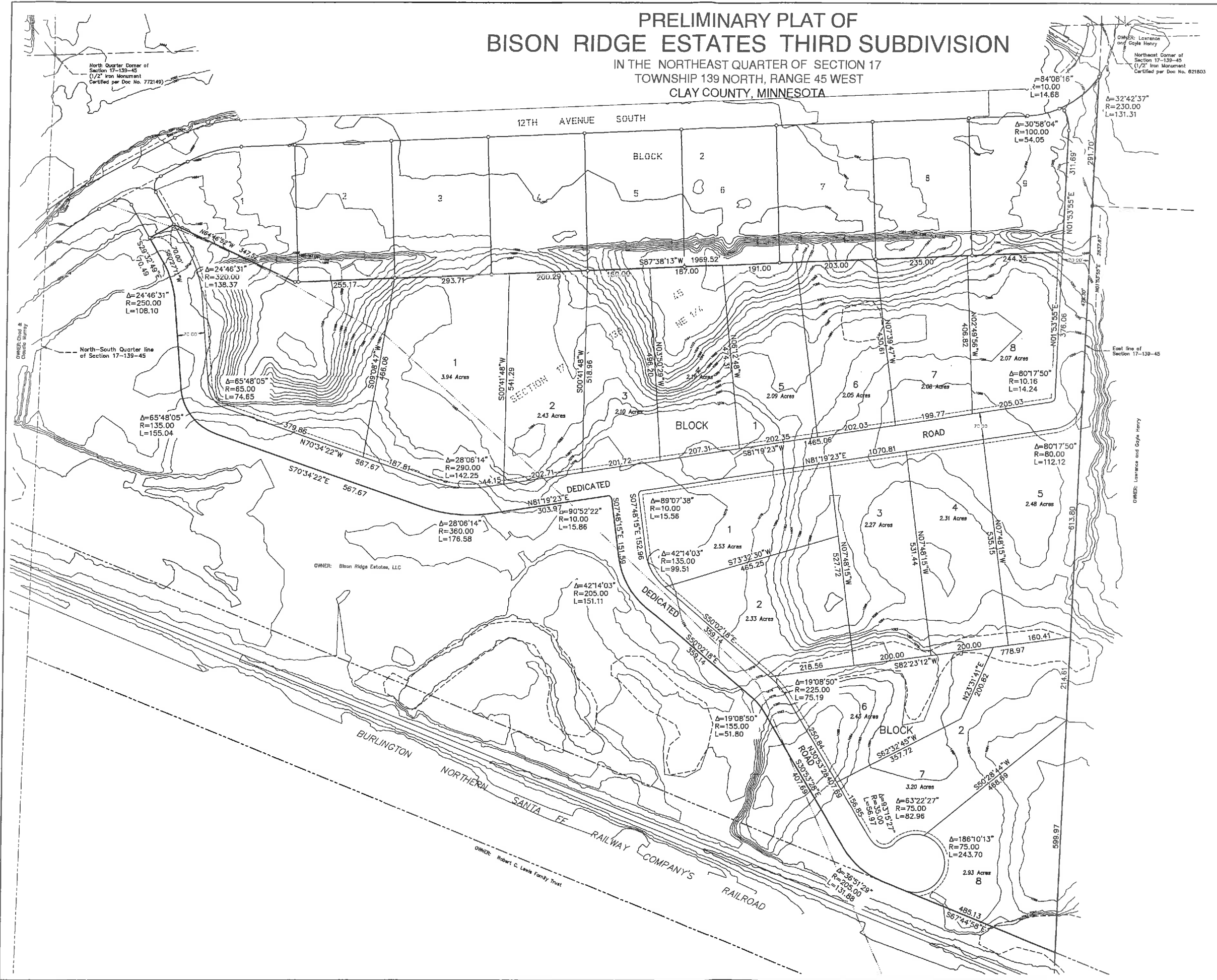
- FOUND IRON MONUMENT
- IRON MONUMENT SET AND MARKED WITH LAND SURVEYOR NO. 43807
- DENOTES 2' CONTOUR LINE WITH ELEVATION OF 1100'
- BASIS OF BEARING: THE SOUTH LINE OF SECTION 8 HAS AN ASSIGNED BEARING OF S88°14'21"W
- Area of DEDICATED ROADS: 8.01 Acres.
- Total Plat Area: 42.53 Acres.
- UTILITY EASEMENTS SHOWN ARE 10.00' WIDE ADJACENT TO DEDICATED ROADS

SURVEYOR: Chris Heyer  
Moore Engineering, Inc.  
925 10th Ave E.  
West Fargo, ND

DEVELOPER: Nugget Investments, LLC  
Raymond Reading  
PO Box 297  
Hawley, MN

# PRELIMINARY PLAT OF BISON RIDGE ESTATES THIRD SUBDIVISION

IN THE NORTHEAST QUARTER OF SECTION 17  
TOWNSHIP 139 NORTH, RANGE 45 WEST  
CLAY COUNTY, MINNESOTA



**SURVEYOR:** Chris Hoyer  
Moore Engineering, Inc.  
925 10th Ave E.  
West Fargo, ND

**LEGEND**

- FOUND IRON MONUMENT
- IRON MONUMENT SET AND MARKED WITH LAND SURVEYOR NO. 43807
- DENOTES 2' CONTOUR LINE WITH ELEVATION OF 1100'

BASIS OF BEARING: THE EAST LINE OF SECTION 17 HAS AN ASSIGNED BEARING OF S01°33'55"W

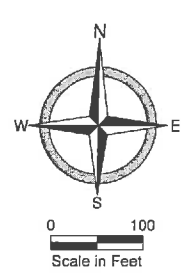
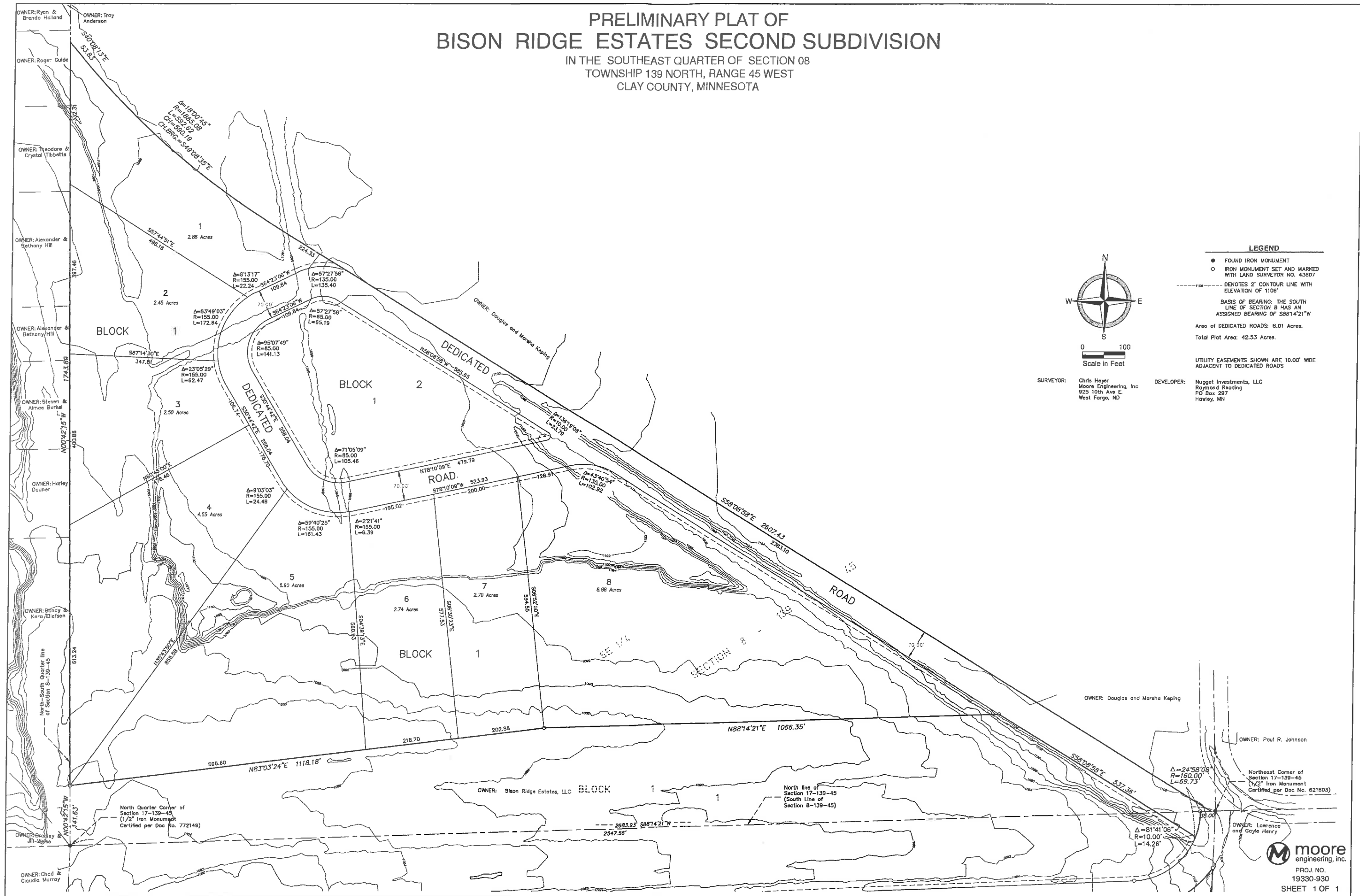
Area of DEDICATED ROADS: 8.15 Acres.  
Total Plat Area: 52.44 Acres.

UTILITY EASEMENTS SHOWN ARE 10.00' WIDE ADJACENT TO FUTURE ROADWAYS.

**DEVELOPER:** Nugget Investments, LLC  
Raymond Reading  
PO Box 227  
Hinley, MN

# PRELIMINARY PLAT OF BISON RIDGE ESTATES SECOND SUBDIVISION

IN THE SOUTHEAST QUARTER OF SECTION 08  
TOWNSHIP 139 NORTH, RANGE 45 WEST  
CLAY COUNTY, MINNESOTA



### LEGEND

- FOUND IRON MONUMENT
- IRON MONUMENT SET AND MARKED WITH LAND SURVEYOR NO. 43807
- DENOTES 2' CONTOUR LINE WITH ELEVATION OF 1108'
- BASIS OF BEARING: THE SOUTH LINE OF SECTION 8 HAS AN ASSIGNED BEARING OF S88°14'21"W
- Area of DEDICATED ROADS: 6.01 Acres.
- Total Plot Area: 42.53 Acres.
- UTILITY EASEMENTS SHOWN ARE 10.00' WIDE ADJACENT TO DEDICATED ROADS

SURVEYOR: Chris Hoyer  
Moore Engineering, Inc.  
925 10th Ave E.  
West Fargo, ND

DEVELOPER: Nugget Investments, LLC  
Raymond Reading  
PO Box 297  
Hawley, MN